



CORNISH ART HISTORY NEWSLETTER

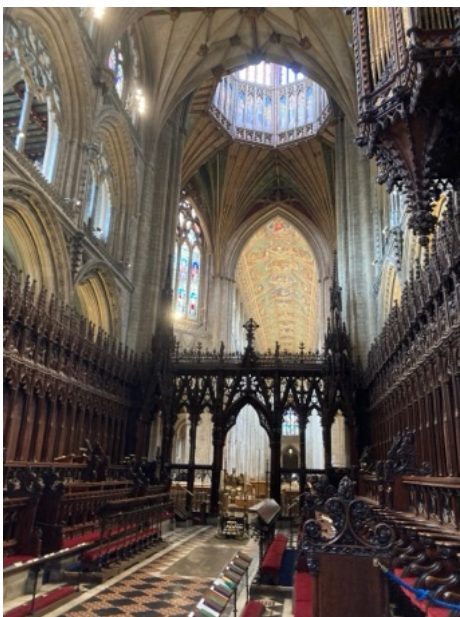
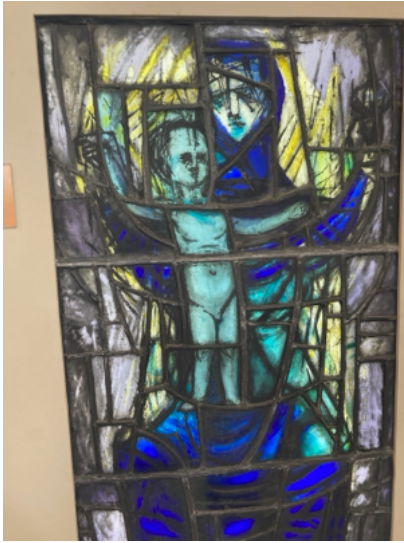
Holiday News - Visit to Ely and Norwich

I am sure you are all off on various holidays this summer so I thought I would share some of mine in my Newsletter .

After a week in Lake Como in Italy in order to finally get some much needed sun, we were off again to the far flung corners of East Anglia for a family get together for my partner Jonathan's Aunt and her family.

We broke our journey at Ely and visited the Cathedral and the Stained Glass Museum which is inside the Cathedral. If you have never been I do recommend both the Museum and the Cathedral. Museum entry cost £6.50 - Cathedral £14. Tower tour(which I did not do as I get vertigo but Jonathan did) cost £11. Here are some photos of the glass in the Museum which included examples from all over the UK and other countries and from all periods. I particularly liked the "joke' window of The Prodigal Son by Moria Forsyth (1905 - 1991) in 1930 for fun. Then there are some photos of Ely Cathedral the sculpture are by Sean Henry.







Norwich Castle Museum - Cornish Connections

It was then interesting to revisit Norwich Castle Museum and Art Gallery - although undergoing major re-development - which meant finding the entrance to the gallery was a bit of a labyrinth. It was great to see works that are connected to Cornwall. Including

The Double portrait of Amelia Opie the artist John Opie's wife, by John Opie known as the Cornish Wonder. Amelia was a published author and anti-slavery activist as well's a musician.





Laura Knight (in Cornwall) painted by Alfred Munnings. Seeing it in reality made me notice the model more who is sitting on the horse in Laura's painting and is shading himself from the sun under the horse in Manning's painting.

Then someone I had not heard of before who was an artist from Norwich **Catherine Maude Nichols (1847-1923)** who came to Cornwall in 1879-80 and produced some watercolours of the cliffs in West Penwith and an etching.



Harold Harvey and Friends Study Day



This study day begins with an illustrated lecture by Catherine Wallace on A Cornish Painter: Harold Harvey (1874 - 1941).

Harold Harvey was one of the few Newlyn painters who was born in Cornwall., eldest of 8 children he grew up in Penzance and was taught by Norman Garstin. After a short stay in Paris for two years furthering his studies he returned to Cornwall and married fellow painter Gertrude Bodinnar,

The Harveys lived a modest life but became friends with Laura and Harold Knight and Dod and Ernest Procter who were to influence Harold's painting style enormously.

A painter of Cornish people and the Cornish landscape in an every increasingly colourful palette, Harold Harvey's paintings combine observation with a compositional inventiveness and a clarity of light which gave them a unique style and define him as a painter. This talk places Harold Harvey's work in a wider context of those around him and looks at his main motifs.

The gather at 10.15am and the lecture runs from 10:30 - 12.30 with a break of half an hour after an hour. The day continues after lunch with a visit to The Exceptional Harold Harvey At Penlee House Gallery in Morrab Road with a Guided tour given by Catherine from 2.00 - 3.00pm

The July date is now full

places available on Wednesday 18 September (10.15am gather) 10:30 - 12.30 and 2- 3.00pm

Cost £35 (does not include gallery entrance fee or lunch)

Lecture At Hypatia Trust, Lower Ground Floor, The Regent, 54 Chapel Street, Penzance, Cornwall TR18 4AE Please note if you just want to come on the guided tour priority will be given to those booking the lecture as well as places are limited. Email me and I will start a waiting list for guided tours only)

The Art of St. Hilary Church Study morning

This Study morning is based at St. Hilary Church, near Goldsithney near Penzance and begins with a lecture given by Catherine Wallace on **Annie Walke and the artists who made paintings for St. Hilary Church**. This includes **Harold Harvey**.

The Reverend Bernard Walke was the Catholic/Anglican vicar of St. Hilary Church for twenty years. He was a huge influence on Harvey and may have been one reason why he converted to Roman Catholicism in 1926. Walke along with his wife Annie Walke (1877 - 1965) befriended many of the artists living and visiting Cornwall at the time and invited them to make paintings for the church.

This lecture looks at the works of Annie Walke and works by other artists including Ernest and Dod Procter, Harold Knight, Alethea Garstin, Joan Manning-Saunders and Roger Fry that were made for St. Hilary.

Followed by a tour of the Visitor centre and Church. **St. Hilary Church, Churchtown, Penzance. TR20 9DQ**

Thursday 18 July or Thursday 19th September 10.15 - 1.00pm Cost £20

At Old school room - upstairs above the Study Centre. And in the Church itself. Please car share where possible as parking is limited. Bring a picnic lunch or lunch available The Crown Inn in Goldsithney or The Packet Inn Smokehouse at Rosudgeon.



Other lectures

Monday 23 September 2.30pm

At the Borlase Smart - John Wells Trust Room - Porthmeor Studio Backroad West, St. Ives - part of the St. Ives September Festival.

The Artists of Anchor Studio, Newlyn: From Stanhope Forbes to the Present Day

Talk by Catherine Wallace

This talk explores the art created by artists who have occupied Anchor Studio in Newlyn from the 1880s to the present day. Notable artists who used the studio include Stanhope Forbes and some of his many students such



as Frank Dobson, Dod and Ernest Procter and Arthur Hayward. From 1947 John Wells used it up to his death in 2000. Since its recent renovations it has been home to artists from around the world in short term residencies .

Tickets via the Cornish Riviera Box Office Price £7

<https://uk.patronbase.com/CornishRivieraBoxOffice/Productions/P05S/Performances>

Monthly Lecture series

This series of lectures includes 3 brand new lectures 3, 5 and 6 . Lecture 2. The Walter Langley lecture was written for the Friends of Penlee House and I have only given it once at Penlee and I have not given my talk on Tuke in Cornwall since 2008. So please come along either on Zoom or live at the Poly. Tickets are now on sale at the Poly via their website <https://thepoly.org/whats-on/talks> and you can booth Zoom/YouTube lectures in advance with me via my Website <https://cathwallace.co.uk/wordpress/art-history-lectures/> on the bottom half of the page or by paying by BACS or sending a cheque to Pendarves, Tremough Dale, Penryn TR10 8JA.

Series of 1 hour lectures At the Poly Falmouth (September - March) and on ZOOM October 2024 - April 2025 6 for £65 or £13 each.



1. Cornwall as an Inspiration for Henry Scott Tuke on **Thursday 26 September** at the Poly @6.00pm <https://thepoly.org/whats-on/event/3021/henry-scott-tuke-in-cornwall> or **Thursday 3rd October 10.30am** on Zoom/Recorded YouTube <https://cathwallace.co.uk/wordpress/art-history-lectures/>

Henry Scott Tuke RA (1858 – 1929) was an artist synonymous with Falmouth and Cornwall.

Although born in York in to a Quaker dynasty, he grew up in Falmouth and later, after his extensive art education, he returned firstly to Newlyn where he became associated with the Newlyn School and then settled in Falmouth in 1885. Due to Cornwall's mild climate, Tuke could paint outside for most of the year and he became famous for his figure paintings of both the clothed and nude models. He had an equal skill at painting boats and sailing ships particularly in watercolour which came from his own knowledge of sailing. Illustrated by many works from the RCPS Tuke collection, this talk by Catherine Wallace, a leading author on Tuke, surveys one of Falmouth's most famous artists.

2. A Sympathetic Eye: Walter Langley's depictions of Women and children

Thursday 24 October 6.00pm at the Poly Falmouth <https://thepoly.org/whats-on/event/3022/walter-langley-s-paintings-of-women-children>

or **Thursday 31 October 10.30am** on Zoom/ recorded YouTube <https://cathwallace.co.uk/wordpress/art-history-lectures/>



This talk analyses how Walter Langley (1852 – 1922) used his depictions of women and children of Newlyn in Cornwall in the late 19th century to express his social realist message and how he shows the reality of their poverty.

Hailing from a working-class background and having grown up in the slums of Birmingham as one of nine children, with seven sisters, Langley possessed firsthand knowledge of poverty and the challenges faced by working women in Victorian society. His paintings of Newlyn Women, spanning from childhood to old age, reflect these experiences.

We also look at the technical skills Langley used to convey the realism of his subject matter in his paintings, particularly using watercolour; we also look at who his artistic role models were and how Langley's paintings were received critically both at home and abroad.



3. **Beyond Newlyn: Newlyn artists before and after Newlyn** On Thursday 28 November 6.00pm at the Poly Falmouth or Thursday 5 December on Zoom/Recorded YouTube

The paintings of the Newlyn group of

artists in the late 19th century are well known, but where the individual artists came from and what their subjects were before they came to Newlyn is less publicised. This lecture traces the story of the Newlyn school artists before they came to Cornwall and the art they created in France, Belgium, Italy, Spain and Holland.

Although many of the most well known artists such as Stanhope and Elizabeth Forbes, Henry Scott Tuke, Norman Garstin and Walter Langley stayed in Cornwall for the rest of their lives, many of the Newlyn artists left after only 4 or 5 years.

This lecture continues to trace the story of these artists works post Newlyn including Frank Bramley, Fred Hall, William Wainwright, Albert Chevallier Tayler, Frank Bourdillon and more.



4. **Dod Procter RA (1892- 1972) A Forgotten Newlyn figure painter** On Thursday 30 January 2025 at 6.00pm at the Poly Falmouth or Thursday 6 February at 10.30am on Zoom/recorded YouTube

This art history lecture explores the figure and still-life paintings of Dod Procter, formerly known as Doris Shaw, one of the most successful painters to emerge from the Forbes School of Painting in Newlyn.

Despite being largely forgotten today, Dod rose to prominence alongside her great friend Laura Knight during the 1920s and 30s

when her painting 'Morning' was acquired for the nation. In 1942, she became only the second woman, after Laura Knight, to be elected a full Royal Academician.

Dod met Ernest Procter, also a student at the Forbes School, in 1907, and they married in 1912, welcoming their son Bill in 1913. This lecture examines the similarities and differences between Dod and Ernest's paintings. Following Ernest's death in 1935, Dod's bold, sculptural style of painting underwent a transition to a more impressionistic approach. Wallace illustrates this shift in Dod's work during the talk.

Later in life, Dod embarked on travels to Africa and the West Indies with friends like Alethea Garstin, capturing the landscapes and children she encountered on her journeys.

5. **Cornish Art Down Under (1870 - 1970)- Art from Cornwall in Southern Hemisphere Galleries**

**on Thursday 27 February 6.00pm 2025
at The Poly Falmouth or Thursday 6 March
at 10.30am on Zoom/recorded Youtube**

Why are there so many works of art depicting Cornwall in the galleries of the Southern hemisphere? This lecture by art historian Catherine Wallace, gives us the answer to this question and a glimpse of the diverse range of works that can be seen in public collections in Australia, New Zealand and South Africa.

Wallace looks at the work by British artists who either sold their works to these galleries at the time or were bequeathed later by private collectors and philanthropists such as Alfred De Pass. These British artists include many who were based in Cornwall such as T.C.Gotch, W.A. Ingram, H.S.Tuke, Elizabeth and Stanhope Forbes, Charles N. Hemy, S. J Lamorna Birch, Charles Simpson and Dame Laura Knight.

Cornwall was also a magnet for artists from the southern hemisphere to come and paint. It is not surprising therefore to find Cornish subjects in the Southern hemisphere collections created by Australian artists such as Richard Hayley Lever, Charles Bryant and David Davies and from New Zealand artists such as Eleanor Hughes and Frances Hodgkins.

Some of these art galleries have continued add to their collections with art work by modern artists in Cornwall such as Richard Eurich, Alfred Wallis, Christopher Wood, Bill Scott, John Tunnard and Dame Barbara Hepworth.



6. **HIDDEN TREASURES: The Art Collections of St.Ives - including St. Ives Town Council, St. Ives Arts Club and Penwith Society**

**on Thursday 27 March at 6.00pm 2025
at The Poly or on Thursday 3rd April at
10.30am on Zoom/recorded Youtube**

In this Art history lecture Catherine talks about her recent experience of cataloguing and researching St. Ives Town Council's art collection which is not well known beyond St. Ives.

With works spanning from the early 19th century to the 21st century the Town's collection not only includes depictions of St. Ives from some of the Towns' most prominent maritime painters, such as Louis Munro Grier, John Anthony Park, and Robert Borlase Smart, it also includes portraits by Leonard



Fuller who came to run the St. Ives School of Painting in 1938. Other towns and harbours in Cornwall are also depicted including Nanledra, Porthleven, Hayle and Portreath. There are several works by women artists in the collection including Mary McCrossan, Dorothy Bayley and Winifred Freeman, along with W. Barns- Graham and Clare White. Dame Barbara Hepworth was given the Freedom of St. Ives in 1968 and the town is home to several major works by this prominent British sculptor from monumental bronzes to table top size work. St. Ives Town Council also has a small but important collection of ceramics featuring Bernard Leach, Shinsaku Hamada, and Janet Leach. Catherine also includes in this lecture other collections of art held by various artist societies in St. Ives.

Art of War: Artists of the First World War (1914 – 1919)

Only Live at The Poly Monday 11th November 2024 - 6.00pm - 8.15pm

Early Bird Tickets £15 Tickets only from <https://thepoly.org/whats-on/event/3025/art-of-war-artists-of-the-first-world-war-1914-1919> In this extended lecture by art historian Catherine Wallace we discover the art created for various Government Schemes to record and interpret aspects of the First World War at home and abroad in the UK. The lecture also looks at the impact being a commissioned war artist had on British modernists such as Paul Nash, C.R.W.Nevinson and Percy Wyndham Lewis.



Catherine also looks at the jobs women undertook during the war as depicted by artists such as Anna Airy, Flora Lion and Clare Atwood and how they reflect the change of women's role in society. The talk also includes how artists such as Lucy Kemp-Welch and Alfred Munnings captured the contribution horses made during WW1.

Before coming to run Falmouth Art Gallery in early 1993, Catherine Wallace worked as a freelance Exhibitions Organiser at the Imperial War Museum, London on a major international loan exhibition called Wyndham Lewis: Art and War for the Wyndham Lewis Memorial Trust. She spent 3 years researching Wyndham Lewis's war art and had access to the Imperial War Museum's art collection which has the largest collection of British Art outside the Tate. www.cathwallace.co.uk

You can still watch the online extended versions of the First World War Artists talks there are three of them - and are £12 each. Visit my website for details.

<https://cathwallace.co.uk/wordpress/artists-of-the-first-and-second-world-wars/>

Saying thanks for the help..

As I am no longer running my live 7 and 8 week courses which I have been doing for the last 15 years I have been helped along the way by so many of you in various ways, but there have been a few special people who I wanted to thank who did everything from laying out chaired and tables, making endless cups of tea and coffee, washing and drying cups, driving me to and from venues including **Liz Gates, Clio Jones and Anne Bendall**. By way of a thank you we

went on a Guided Tour of The Gardens at The Minnack Theatre. It was a lovely day out, the sun shown and the Head gardener Jeff Rowe gave a great tour.



The Show is On: Laura Knight Symposium online recording

I was doing some googling as I tend to do and found that the recording of the Symposium on Laura Knight at Milton Keynes in 2022 is now for all to see on YouTube.

Copy this link into your browser.

<https://www.youtube.com/watch?v=HNf0aAslwJ0>

My talk is at 3.01.27 on the timer if you just want to see that.

On the occasion of the exhibition *Laura Knight: A Panoramic View* at MK Gallery (9 October 2021–20 February 2022) – the largest display of the artist’s works for over fifty years – this conference presented new research on Knight’s career and its contexts, both within the British art world and internationally. This event seeks to reposition Knight’s practice, and to recover those radical contributions to the histories of modern art which have often been overlooked in the effort to define her as an “academic” artist who sat comfortably within the art world establishment.

Guest speakers include: Anthony Spira (Director, MK Gallery), Sarah Victoria Turner (Deputy Director, Paul Mellon Centre), Janet Axten (Social Historian), Linda Bassett (PhD candidate, University of Bristol), Ella Nixon (PhD candidate, Northumbria University), Fay Blanchard (Head of Exhibitions, MK Gallery), Lily Ford (Filmmaker and Historian), Catherine Wallace (Freelance Art Historian), Hannah Starkey (Artist), Annette Wickham (Curator of Works on Paper, Royal Academy of Art), Alice Strickland (Curator, National Trust, London), Hester Westley (Artist’s Lives Interviewer, National Life Stories, British Library) and Damian Le Bas (Writer and Poet).

Other News

Former Ice Works in Newlyn

A new film about Newlyn’s imposing Former Ice Works has been made for Newlyn FISH Trust by Barbara Santi of Awen Productions.

This fascinating short film highlights the historical importance of the ice works and the results of recent professional studies of the building and its machinery, alongside interviews with local people, including two of its former employees.

The film is part of an initial phase of Project Development aimed at moving the Trust closer to acquiring and converting the Former Ice Works into a fishing heritage centre, with uses for the rest of the building designed to generate sufficient funds for its long-term maintenance.

To find out more and to watch the film, please follow this link: <https://newlynfishtrust.org.uk/new-film-about-newlyns-former-ice-works/>

Restoration of Trewarveneth Farm Studio

The Artist Studio adjoining Trewarveneth Manor Farm, is being restored . The studio was built by Stanhope Forbes for his wife Elizabeth Forbes in 1893 - they spent 13 happy years at Trewarveneth, at ‘the top of the hill’, and were followed by Harold & Laura Knight, Sir Alfred Munnings at some stage, and Richard ‘Seal’ Weatherby, a close friend of Munnings, who shared the studio for some time with



Geoffrey Garnier, a fine etcher and engraver.

The studio has amazing links with the Newlyn School artists and it the owner's long term plan to reopen it again, allowing a new generation of artists, and members of the public, to experience this iconic historic building.

Shaun Stevenson the owner has employed Elaine Bowden from Mousehole Heritage walks to oversee the restoration. I have offered to give a

talk there when it opens to the Public so watch this space. The photo of the studio is from when I saw it in May 2022.

Exhibitions

The Exceptional Harold Harvey 1 May 2024 until 28

September 2024 At Penlee House Gallery, Penzance

This major exhibition is being staged to commemorate the 150th anniversary of Harold Harvey's birth.



Born in Penzance, Harold Harvey (1874 – 1941) is one of only two Cornish-born artists of the Newlyn School group. An active member of both the Newlyn and Lamorna artistic colonies, his early works depicting the local fishing industry showed the influence of artists such as Stanhope Forbes and his later work is clearly inspired by the artists of the Lamorna colony, such as Dod Procter.

The exhibition will incorporate over 50 paintings from public and private collections, celebrating Harvey's entire career. This includes some works which have rarely, if ever, been seen before

MARK ROTHKO: THE SEAGRAM MURALS At Tate St. Ives 25 May 2024 – 5 January 2025

For the first time, five of Mark Rothko's Seagram murals are being shown at Tate St Ives. In 1958, the American artist Mark Rothko accepted a commission to produce a series of large paintings for the Four Seasons restaurant in the Seagram Building, New York. He was interested in having a permanent setting where the works could always be shown as a group and in an immersive environment. In the Summer of 1959, Rothko



took a break from working on the murals to travel to Europe with his family. He visited Cornwall, invited by artist Peter Lanyon, and met many like-minded artists including Alan Davie, Paul Feiler and Terry Frost, some who feature in Tate St Ives's current displays. He donated nine of them to Tate in 1969. The Seagram murals were a significant departure for Rothko. The intense, bright colours of his earlier paintings gave way to maroon, dark red and black. Rothko wished to create a deep connection between the viewer and his paintings: This one-room display includes five of the nine murals in the Tate collection.

MABEL PRYDE NICHOLSON EXHIBITION - The Grange Museum, Rottingdeane, Brighton and Hove, Brighton BN2 7HA

20th July – 26th August THE GRANGE MUSEUM Open Wednesday – Saturday 10am – 4pm Sunday 1pm – 4pm



<https://www.rottingdeanheritage.org.uk/mabel-pryde-nicholson/>

Discover the life, loves and influence of Mabel Pryde Nicholson, a talented and versatile painter in turn-of-the-century Britain. This summer, The Grange Gallery will present a landmark exhibition tracing the life and art of the painter Mabel Pryde Nicholson (1871-1918) – ‘Prydie’ to her family and friends. For more than a century, Mabel’s story has been overshadowed by the artistic success of her husband, the society portrait painter and still life virtuoso William Nicholson, and her sons, the pioneer of British abstraction Ben, and modernist architect Kit. Set within the historical context of Edwardian Britain and France, **Prydie:**

the life and art of Mabel Pryde Nicholson – will be the first exhibition of the artist’s paintings for more than 100 years. Several were made at The Grange itself – the Nicholsons’ home between 1909 and 1914. Curated by David Bomford and Lucy Davies, the show brings together nearly 30 objects from private collections and national institutions including portraits of the artist by her husband William and poignant letters, photographs and personal objects, almost all of which have been unseen since Mabel’s death in the Spanish Flu epidemic of 1918. A **new biography by Lucy Davies**, published by Eiderdown Books, will accompany the exhibition. For more information: info@thegrangegallery.com